



Beech Newsletter

Spring Term 1 2023-24



Upcoming Diary Dates:

Number Day –

Friday 2nd February

Safer Internet Day -

Wednesday 7th February

World Book Day -

Thursday 7th
March



Half-term holiday:

19th - 23rd February

General Class News:

Welcome back and a Happy New Year to you all. We hope everyone has had a restful Christmas as we have a busy and eventful term ahead, as always.

We have been working hard to address your child's EHCP targets. Last term, the students in Beech Class spent time learning about money and telling the time; how to communicate effectively; fine tuning our handwriting skills and following a fitness circuit in the gym. We will continue to work on these skills throughout the year.

Please could we remind you to check that all items brought into school are clearly labelled including coats, lunch boxes and PE kits. Now that the colder months have settled in, can you please ensure that your child is dressed appropriately for outdoor activities. Thank you for remembering to send in your child's school diary every day. We find that it is an efficient way to communicate with you.



Mr Hamilton, Mrs Flowerday and Miss Olivey



Maths

This half term, Beech Class will continue to develop their everyday number skills using time, money and fractions. We will also be working on multiplication in greater depth, which we can apply finding area and perimeter. We will measure length, mass and capacity. Pupils have been trialling a new program called Numbots.

Have a go at home! - Beech Class have enjoyed using the following online game to test their timetables knowledge— <https://www.timestables.co.uk/>



Science

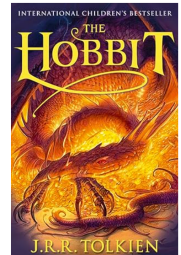
This half term we will be investigating magnets and magnetic fields. The students will use a magnet to make their own compass, and then plot the magnetic fields of various magnets. They will then design their own experiment to find the strongest magnet, before then moving onto building their own electromagnet.



English

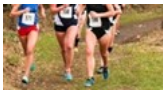
We have had quite an emotive time in Beech English this half term reading and studying all the themes connected with *Private Peaceful* by Michael Morpurgo. Set in WW1 it explores family, brotherhood, conflict and desertion. We had some great readers, produced some fantastic written work and even watched the film which brought everything to life. Spelling, punctuation and grammar activities helped everyone's progression in their written work.

Next term our chosen book is *The Hobbit* by JRR Tolkien which will be an exciting read. The genre of science fiction and fantasy always allows for some escapism in the classroom. We will be looking at storyline (narrative), character analysis and how the setting acts as another character within the film.



PE

This term pupils will be practising for the school cross country race as well as engaging in handball, gymnastics, appropriate level racket sports, and finally, dance exercises such as aerobics and Zumba. Let's hope the weather is kind to us!



RSHE

The term starts looking at managing feelings around romantic attraction. We will consider how emotions change as we grow and explore the physical and emotional changes that happen during puberty. Pupils will learn about reproduction, conception, and fertility.

Please visit the school's website: <http://sidestrandhall.org.uk/policies/> for more detail about our RSHE curriculum. All RSHE teaching takes place will take place in a safe learning environment and is underpinned by our school ethos and values.

Other subjects:

Music We will be learning to play the recorder as part of the music curriculum. Although we do have a class set of recorders, which are sterilised after each session, it would be a good opportunity to bring or purchase your own, if you felt so inclined (not compulsory, of course).

Topic This term we will be learning about the continent of Asia. Specifically, we will be finding out how China became an economic powerhouse, as well as learning about the geography of the region, including how the Himalayas influence weather patterns.



Outdoor Learning Pupils will look for signs of the transition from Winter to Spring, focussing on weather patterns and different cloud formations. Classes will also participate in the annual RSPB Bird Watch, with a focus on swallows, swifts, and house martins.



Other useful information

Time and Money Two-Step Problems - <https://www.topmarks.co.uk/Search.aspx?q=word%20problems>

Topic (Asia) - <https://kids.britannica.com/kids/article/Asia/346086>

RE (Buddhism) - <https://kids.britannica.com/kids/article/Buddhism/352887>